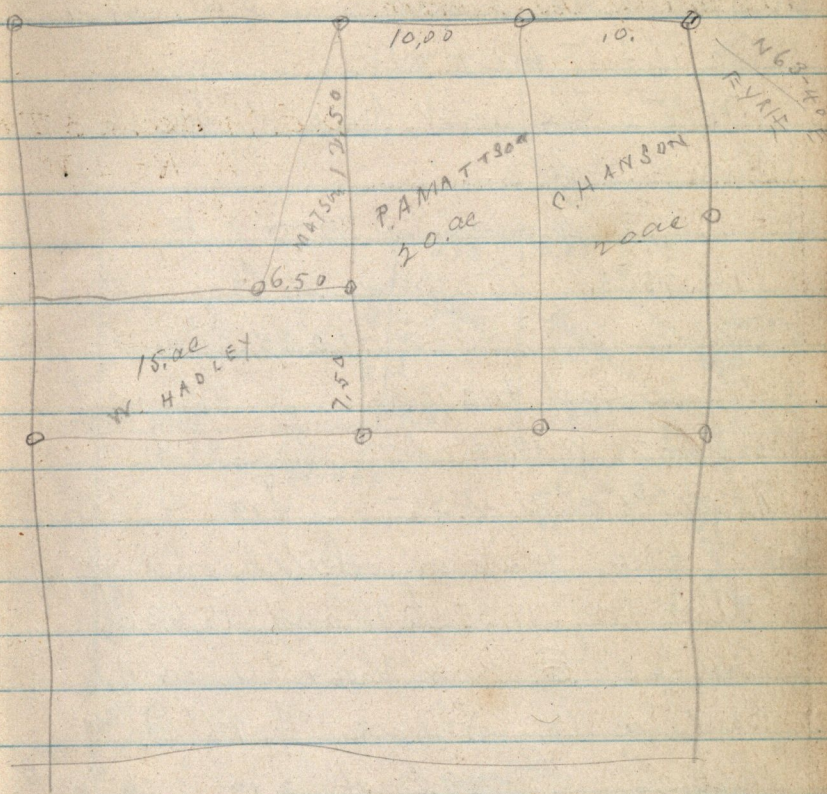


Feb 17, 1885 West Water,

5

NE 1/4 Sec 32 T6 NR2W



Copy of deed from John Martin to Thomas  
Jenkins, dated Nov. 26-1876. - K-164 -

Bag, 30.80 ch E. from S.W. cor. said 1/4 Sec. E. 9.00  
 ch N. 18.82 ch on Sec line and to Mid Slough  
 S 76° W 4.75 ch S 46° W 3.20 ch S 27° W 2.90  
 ch S 14 1/2° W 2.50 ch in mid Slough S 8.40 to  
 Sec line + to bag. 13, a more or less.

(N 106 7/8 from S.E. cor. of Sec 23 T-6-N-R-2-W.  
 to Slough described as boundary to Jenkins)